

SUSTAINABILITY

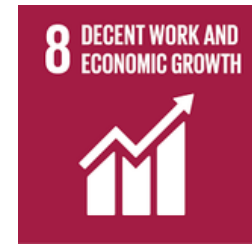
ANNUAL REPORT

FORGING A
GREENER
TOMORROW

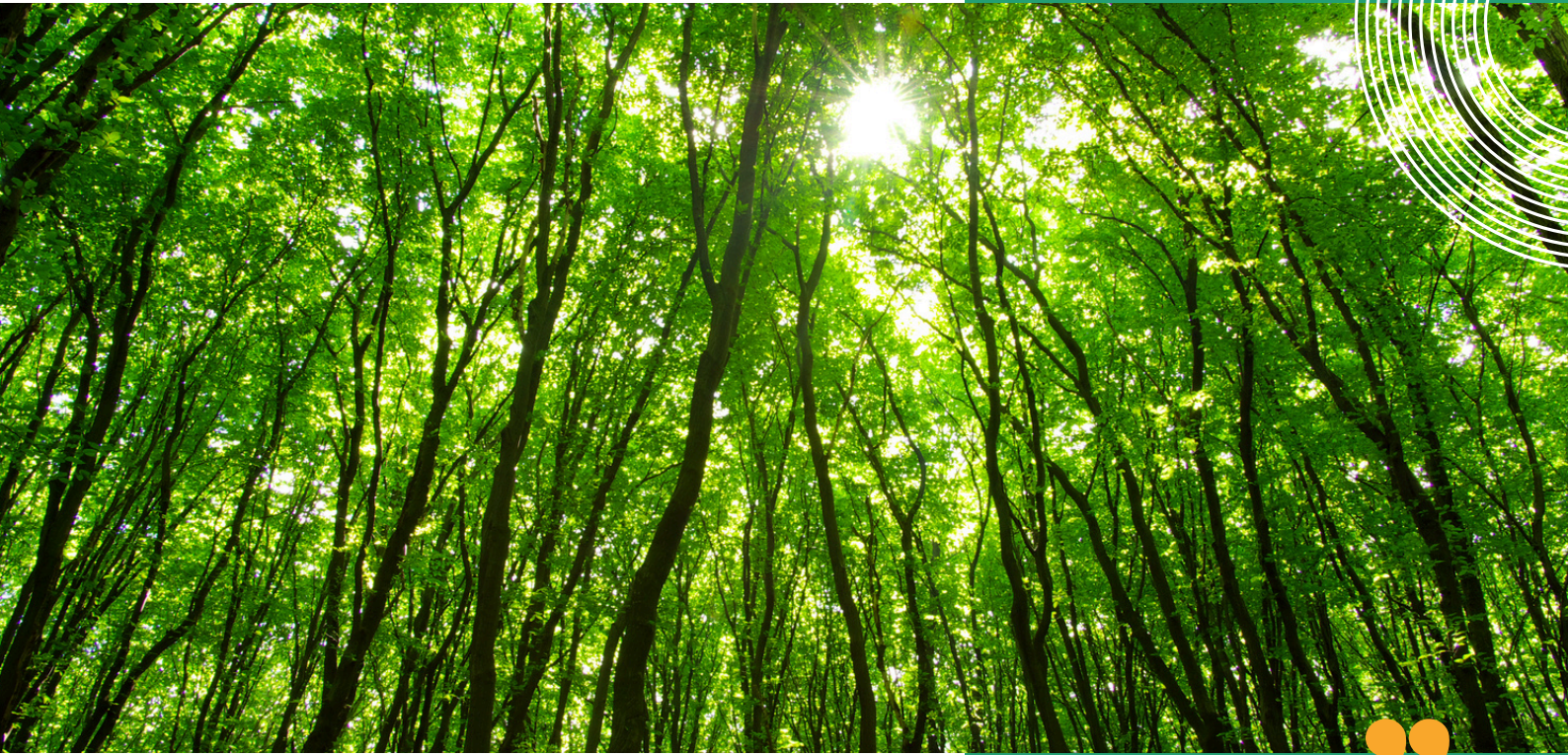
2024

www.giu.edu.pk

SDGs 17 GOALS



SCOPE OF THE SUSTAINABILITY REPORT



The Sustainability Report 2024 of Green International University presents the university's continuous journey toward building a more equitable, healthy, and sustainable future. Covering the period from January 1 to December 31, 2024, this report highlights GIU's progress, achievements, and commitments that reflect its alignment with the United Nations Sustainable Development Goals (SDGs).

At GIU, sustainability is not just an institutional value it is a shared responsibility. Through education, research, and community partnerships, the University strives to address social challenges, reduce inequalities, and promote collective well-being.

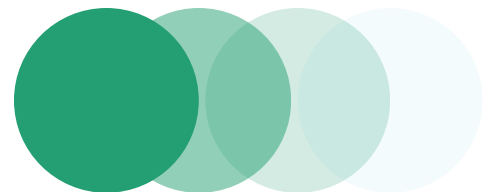
Public reporting remains central to GIU's commitment to transparency and accountability. This report reflects how the university's academic programs, research initiatives, and operational practices impact the environment, local communities, and society at large. By sharing this information openly, GIU strengthens trust and encourages collaborative action toward sustainable progress.

Assessing **Key** Sustainability **Priorities**



SUSTAINABILITY REPORTING APPROACH

Green International University's 2024 Sustainability Report follows principles of stakeholder inclusiveness, sustainability context, and completeness. Guided by global standards, GIU conducts risk reviews, community engagement, and SDG-focused assessments. Public outreach and stakeholder input help refine priorities, ensuring accurate reflection of the university's social, economic, and environmental impacts and strategic direction.



Sustainability Commitments of Green International University

Climate Change Action

Implementing proactive measures to reduce greenhouse gas emissions and enhance resilience against climate-related risks.

Infrastructure

Developing sustainable and inclusive infrastructure that improves community well-being and supports environmental sustainability.

Research and Innovation

Creating and applying knowledge to address complex challenges, benefiting society and the environment through collaborative research.

Learning and Teaching

Enhancing education through high-quality experiences that develop ethical global citizens within an open learning ecosystem.

Sustainable Supply Chains

and Procurement Leveraging purchasing power to manage risks and drive sustainability outcomes in procurement practices.

Governance, Culture, Values

Upholding a culture of ethical conduct and integrity, ensuring transparency in partnerships and decision-making.

Responsible Investment

Integrating environmental, social, and governance factors into investment decisions to minimize negative impacts and support positive outcomes.

Partnerships

Collaborating with local stakeholders to advocate for an inclusive and sustainable society, fostering trust and mutual benefits.

Public Policy and Leadership

Taking a leadership role to influence and inspire communities through innovative ideas and insights.

Community and Public Engagement

Promoting engagement with the community to raise awareness of sustainability issues and encourage responsible behaviors.

Inclusion, Diversity, Equity, and Access

Advocating for participatory governance while promoting diversity and inclusion for all community members.

Empowering Our People

Fostering an inclusive culture that supports a resilient workforce through progressive employment practices and growth opportunities.

Supporting Indigenous Rights

Ensuring that the rights and culture of Indigenous peoples are recognized and celebrated.

Supporting Our Students

Developing a support model that acknowledges diverse backgrounds and equips learners with necessary skills and resources.

Promoting Circular Economy and Resource Efficiency

Transitioning to a circular economy in Faisalabad by eliminating waste and pollution through innovative design, while maximizing the lifecycle of materials via repair, reuse, and remanufacturing.

Sustainability Commitments of Green International University

Green International University (GIU) is committed to advancing sustainability through education, research, and community engagement. In 2024, GIU focused on No Poverty (SDG 1), Zero Hunger (SDG 2), Good Health and Well-being (SDG 3), and Partnerships for the Goals (SDG 17), promoting inclusion, food security, wellness, and collaboration for a sustainable and equitable future.

Key Takeaways

Great Concept Ideas

The University strongly supports women empowerment, not only by providing employment opportunities but also through education. The designated female campus serves as a testament to this commitment.



Improvements in inclusion, diversity, equity, and access remain a core focus. A commitment to these values has led to the development of a comprehensive framework that enhances well-being and promotes understanding within the community, ensuring a more equitable environment for all.



302kVA on-grid solar system has also been implemented, exceeding energy production expectations and contributing to sustainability goals.

About GIU



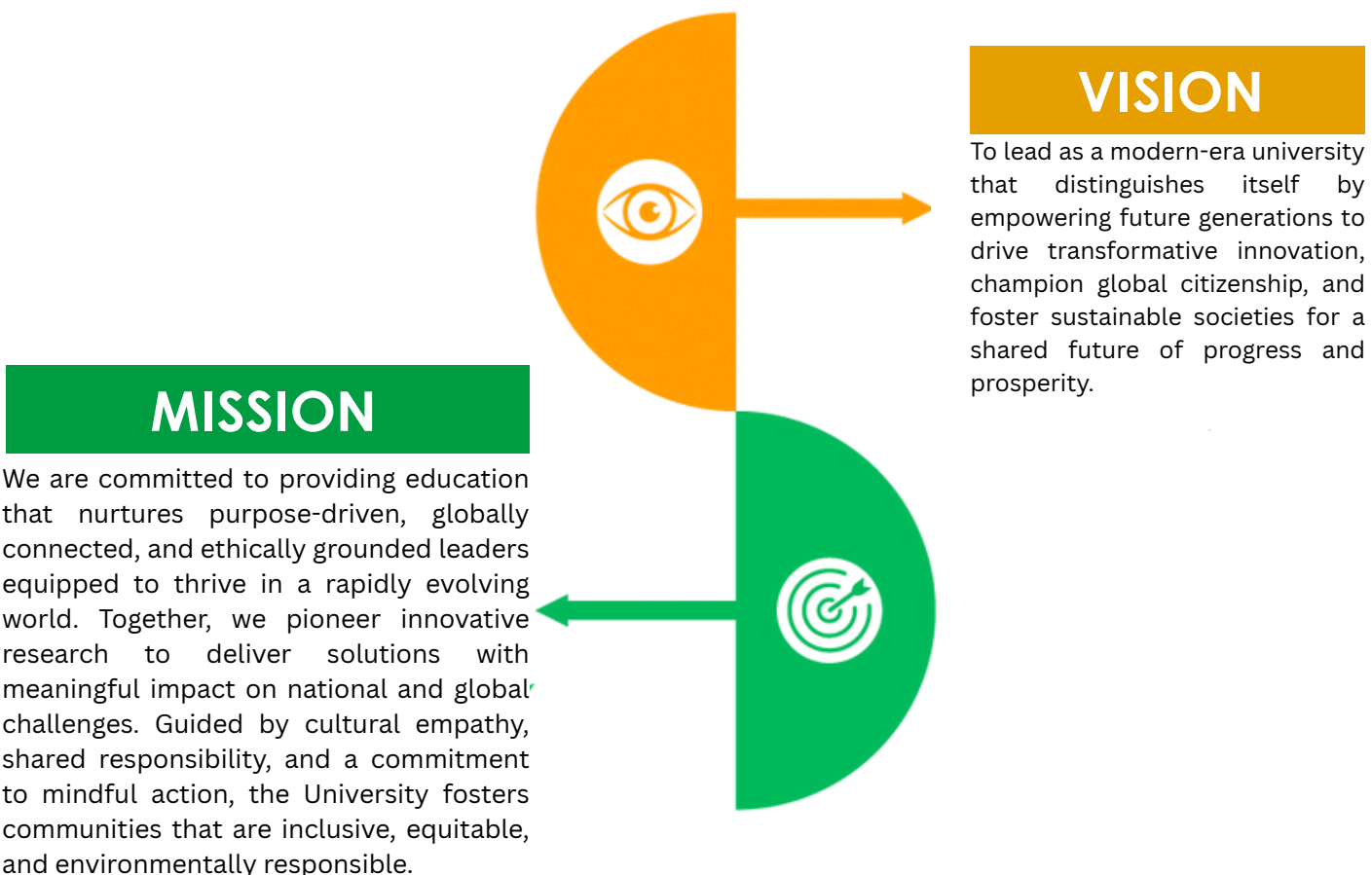
Madinah Foundation is a philanthropic organization founded by Haji Muhammad Saleem (Late) with the vision of “Industry, Service, Education.” The Foundation is dedicated to serving humanity in various sectors, including health and education.

We feel honored that, in recognition of our mission to provide excellent education and disseminate knowledge for a better world, the Government of Punjab awarded Madinah Foundation the charter to establish Green International University, Lahore, on June 4, 2020.

Green International University is committed to providing quality education, research, and innovation in line with the global transformation toward a knowledge-driven economy.

The University will adopt strategies that promote excellence in academics and research, in accordance with its vision and mission. We will strive to provide students with opportunities to develop a global mindset by establishing international collaborations.

We look forward to proudly empowering and grooming the youth of Pakistan to embark on successful professional careers, fostering a sense of achievement to meet global challenges, and contributing to the socio-economic development and prosperity of Pakistan.



The Office of Sustainability

The Office of Sustainability at Green International University (GIU) is dedicated to advancing sustainability initiatives that integrate core educational functions with an emphasis on improving student literacy. The office promotes collaboration among students, faculty, and the community to enhance educational outcomes and increase awareness about sustainability. Through these efforts, the office aims to foster a culture of sustainability at GIU and empower students to become informed advocates for responsible practices in society.

**“Learning Today, Leading
Sustainability Tomorrow.”**



SDG 1: No Poverty

Dedicated Student Backing

1 NO POVERTY



Green International University (GIU) is committed to ensuring equitable access to higher education for students from low-income and financially disadvantaged backgrounds. Prioritizing admissions for those in the bottom 20% of national household income groups, the University operates a comprehensive anti-poverty program under the Madina Foundation to support their academic continuity and well-being. GIU sets specific graduation targets for these students and provides extensive free services, including food, housing, transportation, legal aid, tutoring, mentoring, and academic support, to ensure their successful degree completion. The University also offers fully funded opportunities to students from low- and lower-middle-income countries, fostering an inclusive environment for international learners. Beyond academics, GIU strengthens local communities by offering mentorship, training workshops, financial assistance, and facility access to support socially responsible business start-ups, while also improving access to basic services through capacity-building initiatives. Additionally, the University actively contributes to policymaking at various levels, working with government bodies and NGOs to support poverty alleviation efforts. Through these combined initiatives, GIU continues to empower disadvantaged students, foster community development, and advance sustainable socio-economic progress.

Scholarship Policy

MERIT SCHOLARSHIPS:

According to Marks

KINSHIP SCHOLARSHIP:

The kin of alumni/ae and existing participants (brother, sister, husband, wife, son and daughter) will be awarded 10% kinship scholarship in all programs of the University.

DIFFERENTLY ABLED SCHOLARSHIP:

Your ability matters more than your limitation. 50% Scholarship For students with certified disabilities.

SPORTSMEN SCHOLARSHIP:

Outstanding sportsmen/women will be awarded scholarship as per the policy.

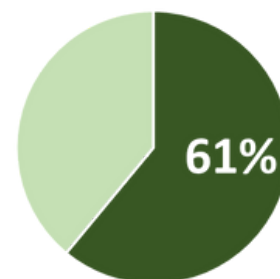
RULES GOVERNING SCHOLARSHIPS:



SCHOLARSHIP FOR STUDNETS
FROM LOW-INCOME FAMILIES
Upto 100% SCHOLARSHIP

PKR in Millions

Low Income Students Receiving Financial Aid
(61%)



SCHOLARSHIP FOR
INTERNATIONAL STUDENTS
100% SCHOLARSHIP FOR LOW
OR LOWER-INCOME COUNTRIES

Support for Community Anti-Poverty Initiatives



In 2024, Green International University (GIU) strengthened its commitment to accessible and inclusive education by providing comprehensive financial aid to 1,565 low-income students (61%) and meeting its target of admitting at least 25% new students from the bottom 20% income group under its Anti-Poverty Strategy Policy. With a graduation success rate of 94.1% for this group, the University demonstrated that financial challenges do not hinder academic achievement. GIU expanded its welfare and academic support framework by enhancing need-based assistance, transportation, accommodation, meal services, legal aid, tutoring, faculty consultations, mental health support, and skill-development initiatives. The University also broadened its international scholarship programs, offering full financial support to students from low-income countries such as Sudan and Palestine. To promote entrepreneurship and community development, GIU partnered with SEE Pakistan to co-host the Lahore Regional Round, offering mentorship, industry exposure, and financial assistance to socially responsible startups. Additionally, the University strengthened community engagement through workshops on health, water, sanitation, education, and digital literacy, and contributed to poverty eradication efforts by participating in government-led sessions and conducting compliance visits, including an assessment at SOS Village. Together, these efforts highlight GIU's holistic approach to empowering disadvantaged students, supporting entrepreneurship, and building resilient communities.



- Financial Aid & Access to Education
- Anti-Poverty Policy Implementation & Targets Achieved
- High Graduation Success Rate for Low-Income Students
- Expanded Student Welfare & Academic Support Services
- International Scholarships for Students from Low-Income Countries
- Entrepreneurship Support & SEE Pakistan Partnership
- Community Development & Capacity-Building Initiatives
- Collaboration with Government & Social Institutions





SDG 2: Zero Hunger



Green International University is committed to combating food insecurity and promoting sustainable agriculture through a comprehensive support system for students, staff, and the local community. The University provides free meals to students in financial hardship, subsidized options for those with temporary needs, and daily meals priced below one dollar, along with access to food banks and healthy, sustainable, vegetarian, and vegan choices across campus. Staff wellbeing is also prioritized through affordable and nutritious food support. Beyond campus, GIU empowers local farmers and food producers by offering training, field demonstrations, radio-based programs, and access to university facilities, including labs and technology, to strengthen sustainable farming practices. The University hosts events to facilitate knowledge exchange and supports regional economic development by prioritizing procurement from local, sustainable sources. Through these integrated measures, GIU reinforces its commitment to food security, community support, and sustainable development.

Free Meals

“Under the umbrella of Madinah Foundation and Green International University (GIU), free meals are provided daily to over **3,500** individuals, including **students** and others.”

People's Evaluation Of Us



In 2024, Green International University (GIU) strengthened its commitment to nutrition, food security, and sustainable agriculture by introducing healthier, diverse, and environmentally responsible campus dining options, supported by the Green University Café and a Food Resource Centre offering free nutritious meals to students. The University expanded its Hunger Alleviation Framework through a Campus Food Bank, Emergency Meal Vouchers, Nurture Cards for underrepresented students, and discounted off-campus dining partnerships. GIU further embedded sustainability by redesigning menus, adopting responsible sourcing practices, ensuring daily vegetarian and vegan choices, and keeping all meals priced below one dollar. Food quality and accessibility were enhanced through improved nutrition standards, upgraded kitchen hygiene, and expanded staff food assistance. Beyond campus, GIU advanced regional agricultural resilience by providing farmers with extensive training, field demonstrations, radio programs, and hands-on sessions covering sustainable farming, climate-resilient techniques, water and soil management, organic methods, and digital tools. Farmers were also granted access to university labs and technology for practical learning. Additionally, GIU strengthened sustainable food systems by prioritizing the procurement of fresh, locally sourced produce. Through these combined efforts, the University reinforced its commitment to wellbeing, environmental stewardship, and community empowerment.

- Student Food Security Programs
- Affordable and Healthy Campus Dining
- Staff Hunger Alleviation Measures
- Sustainable Agriculture Outreach:
 - Promotion of Modern and Climate-Resilient Farming
 - Eco-Friendly Procurement
 - Community Engagement & Knowledge Transfer





SDG 3: Good Health And Well Being

3 GOOD HEALTH AND WELL-BEING



Green International University (GIU) promotes health, wellbeing, and community empowerment through collaborations with health institutions and outreach programs on hygiene, nutrition, family planning, healthy aging, and physical activity. The University fosters healthy lifestyles via student volunteering and provides free access to sports facilities for local schools and the public. GIU offers comprehensive sexual and reproductive health services through Ali Fatima Hospital and campus-wide education via Abu Ummara Medical and Dental College. Mental health support is provided to students and staff through the Serenity Support Center, offering counseling, therapy, crisis management, and awareness programs. Additionally, GIU maintains a fully smoke-free campus across all buildings, hostels, transport, and outdoor spaces. These initiatives create a supportive, inclusive, and health-conscious environment for students, staff, and the wider community.

50+
COMMUNITY
SERVICE PROJECTS





In 2024, Green International University (GIU) strengthened its commitment to health, wellbeing, and community engagement through partnerships with hospitals, public health agencies, universities, and health organizations, enhancing knowledge exchange, clinical training, and research. The University delivered community outreach programs, including workshops, health camps, free medical, eye, and dental services, and partnered with Rescue 1122 to train students and disadvantaged community members in emergency response. GIU promoted active lifestyles through school festivals, community leagues, youth events, and open play hours. Reproductive health support included awareness drives, counseling, workshops, and free specialist services for students. Mental health services were enhanced via the Serenity Support Center, offering counseling, workshops, online support, and targeted programs. The smoke-free campus policy was reinforced through education, signage, ambassadors, and accountability measures, while staff wellbeing was supported with extended clinic hours, workplace initiatives, seminars, and stress-management accommodations. These initiatives reflect GIU's holistic approach to fostering healthy, resilient, and empowered students, staff, and communities.

- Health-Sector Partnerships
- Community Outreach
- Sports & Physical Activity
- Reproductive Health Services:
- Mental Health Support
- Smoke-Free Campus
- Staff Wellbeing





SDG 4: Quality Education

4 QUALITY
EDUCATION



Green International University Lahore is deeply committed to advancing SDG 4 by promoting inclusive, equitable, and high-quality education through a strong focus on lifelong learning. The University ensures open access to learning by providing free educational resources for individuals who are not enrolled at GIU, enabling broader community empowerment. GIU also organizes post-educational events, seminars, and knowledge-sharing sessions that remain open to the general public, fostering a culture of continuous learning. To strengthen skill development and enhance employability, the University will regularly organize vocational training programs designed for community members and individuals outside the university system, while also actively conducting dynamic educational outreach activities that include tailored lectures, demonstrations, and interactive learning experiences in local schools and community settings. As these activities and events are essential for the University, GIU is planning to further expand and introduce these initiatives in the future. Central to its mission, the University will uphold a Lifelong Learning Access Policy to ensure that all educational opportunities and initiatives remain accessible to everyone, regardless of ethnicity, religion, disability, immigration status, or gender. Through these forward-looking measures, Green International University Lahore aims to promote quality education for all, nurturing an empowered, informed, and inclusive society.



SDG 5: Gender Equality

5 GENDER
EQUALITY



Green International University Lahore is firmly committed to advancing SDG 5 by promoting gender equality through inclusive policies, equitable opportunities, and strong institutional accountability. The University systematically measures and tracks women's application, acceptance, and entry rates, ensuring transparent evaluation and continuous improvement in gender representation across all academic programs. GIU implements a dedicated Gender Access and Participation Policy that supports women at every stage of their educational journey, complemented by tailored mentoring initiatives, scholarship schemes, and targeted outreach campaigns encouraging women to apply in disciplines where they are traditionally underrepresented. These efforts will be further strengthened through active collaboration with other universities, community organizations, government bodies, and NGOs at regional and national levels to amplify awareness and expand opportunities for women. Upholding a zero-tolerance stance on discrimination, the University will implement and enforce comprehensive policies protecting women, transgender individuals, and all gender identities, along with structured maternity and paternity policies that will support a healthy work-life balance. GIU will also establish secure reporting mechanisms and robust protections for individuals who report discrimination or harassment. Through these integrated and forward-looking measures, Green International University Lahore will foster a fair, inclusive, and empowering environment where all individuals can thrive equally.



SDG 6: Clean Water and Sanitation

6 CLEAN WATER AND SANITATION



Green International University Lahore is strongly committed to advancing SDG 6 by ensuring responsible water management, sustainable usage, and safe sanitation practices across its campus and surrounding communities. The University has an established waste water treatment process that prevents polluted or contaminated water, including water affected by accidents or incidents, from entering natural water systems. GIU provides free, safe drinking water to all students through conveniently placed water fountains, while implementing building standards designed to minimize water consumption. Guided by its Water Reuse and Conservation Policy, the University works to maximize water reuse across campus and actively measures progress to ensure continuous enhancement of water efficiency.



Beyond its internal systems, GIU offers educational opportunities for local communities to learn about effective water management, responsible water conservation, and sustainable water extraction. The University will actively support off-campus water conservation initiatives and will collaborate with local, regional, national, and global governmental bodies to contribute to long-term water security. Through future awareness campaigns and capacity-building activities, Green International University Lahore will promote conscious water usage both on campus and within the wider community, reinforcing its continued commitment to ensuring clean water and sanitation for all.

SDG 7: Affordable And Clean Energy

7 AFFORDABLE AND
CLEAN ENERGY



Green International University Lahore is dedicated to advancing SDG 7 by promoting affordable, reliable, and clean energy through robust institutional policies and sustainable operational practices. The University has established clear guidelines ensuring that all new construction and renovation projects adhere to high energy-efficiency standards, while also maintaining strategic plans to upgrade existing buildings to achieve improved environmental performance. GIU has implemented a structured carbon management process aimed at reducing carbon dioxide emissions and actively works to lower overall energy consumption by identifying and addressing areas with the highest levels of energy waste. Beyond campus operations, the University plays an important role in community education by offering programs that raise awareness about the significance of clean energy, energy conservation, and sustainable resource use. GIU further extends its impact by promoting renewable energy adoption in the wider community and delivering direct services to local industries, such as energy-efficiency assessment workshops and research support for renewable energy solutions. Additionally, the University provides guidance and assistance to startups developing low-carbon technologies or business models that contribute to a sustainable and climate-resilient future. Through these integrated efforts, Green International University Lahore actively fosters a culture of energy responsibility and innovation, reinforcing its commitment to affordable and clean energy for all.



SDG 8: Decent Work and Economic Growth

8 DECENT WORK AND ECONOMIC GROWTH



Green International University Lahore is strongly committed to advancing SDG 8 by fostering a fair, inclusive, and sustainable work environment that promotes decent employment opportunities and long-term economic growth. The University ensures that all faculty and staff receive at least a living wage or meet the local financial poverty indicator for a family of four, reflecting its commitment to economic dignity. GIU recognizes labor unions for all employees, including women and international staff, and upholds comprehensive policies that strictly prohibit workplace discrimination based on religion, gender, sexuality, age, or refugee status.



The University maintains a zero-tolerance stance against forced labor, modern slavery, human trafficking, and child labor, ensuring ethical labor practices across all operations. Additionally, GIU enforces policies that guarantee equivalent labor rights when outsourcing activities to third-party organizations, safeguarding fairness and transparency throughout its supply chain. To promote pay scale equity, the University will systematically measure and track gender-based pay gaps and will establish a clear, accessible process for employees to raise and appeal concerns related to compensation, worker rights, or workplace treatment. Through these integrated measures, Green International University Lahore will champion decent work conditions and equitable economic participation for all members of its academic community.

SDG 9: Industry, Innovation & Infrastructure

9 INDUSTRY, INNOVATION
AND INFRASTRUCTURE



Green International University (GIU), Lahore, demonstrates a strong commitment to SDG 9 by promoting research-driven innovation, industry partnerships, and resilient academic and technological infrastructure. The University conducts high-impact research in engineering, technology, smart agriculture, renewable energy, artificial intelligence, and sustainable materials. Faculty and students publish in indexed journals and collaborate on industrial projects addressing real-world challenges, supported by modern laboratories and digital platforms for automation, environmental monitoring, and energy efficiency.

GIU facilitates innovation commercialization through patents, intellectual property protection, product development, and incubation facilities. Student and faculty led startups receive mentorship, seed funding, and guidance to move from concept to market. The university generates research income through funded projects, consultancy, and contract research, while industry-sponsored challenges enhance practical engagement.

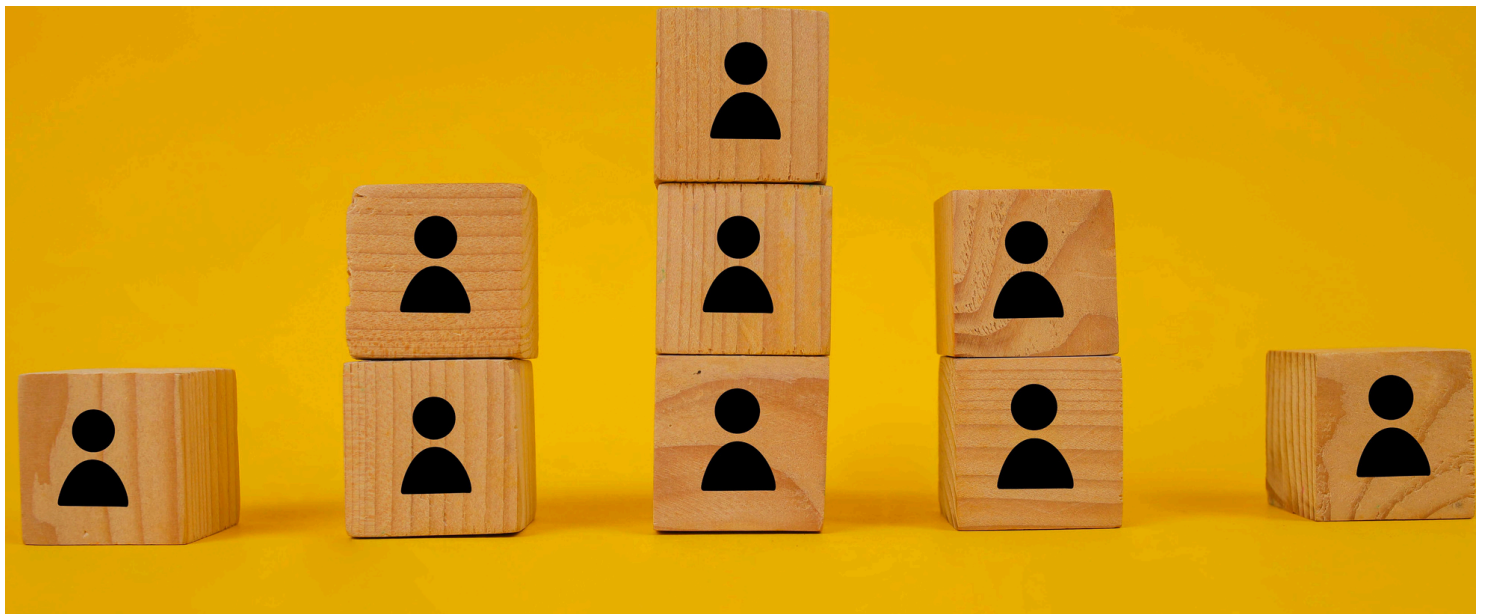
Looking ahead, GIU will further expand collaborations with industries, government agencies, NGOs, and international institutions to promote joint R&D, internships, field placements, and co-supervised projects. The University will advance entrepreneurship and technological literacy through AI, robotics, digital skills, and design-thinking training programs, including workshops for SMEs. Through strengthened research, partnerships, innovation support, and infrastructure development, GIU will continue to enhance industrial capacity, foster sustainable innovation ecosystems, and drive technological growth in alignment with future development needs.



SDG 10 : Reduced Inequalities



Green International University (GIU), Lahore, demonstrates a strong commitment to SDG 10 by ensuring equitable access to education, promoting inclusive policies, and advancing research on inequalities. The University contributes through Scopus-indexed publications on economic inequality, gender gaps, disability inclusion, and social mobility, maintaining strong citation performance and a growing output of articles, reviews, and conference papers. GIU ensures inclusivity for first generation students with scholarships, flexible fees, and targeted outreach to rural and underserved communities. International students from developing countries receive equal access to academic resources, housing, and cultural integration support. Students and staff with disabilities are supported through reserved quotas, accessible infrastructure, assistive technologies, and specialized accommodations.



GIU will broaden inclusive admissions and outreach programs to ensure equitable access for first-generation and international students. The University will strengthen research initiatives on economic inequality, gender disparities, disability inclusion, and social mobility to guide evidence-based policy and practice. Students and staff with disabilities will receive enhanced support through upgraded infrastructure, advanced assistive technologies, and tailored accommodations. GIU will reinforce workplace inclusivity through equitable recruitment, accessibility measures, and ongoing professional development. By leveraging research, inclusive policies, diversity programs, and anti-discrimination frameworks, GIU will sustain measurable contributions toward reducing inequalities at both national and global levels.

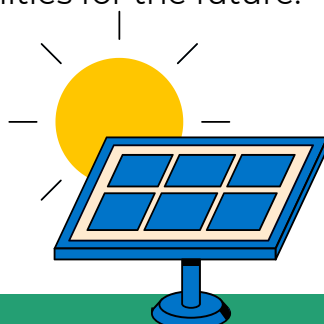
SDG 11: Sustainable Cities and Communities



Green International University (GIU), Lahore, demonstrates strong commitment to SDG 11 by promoting sustainable urban development, preserving cultural heritage, and ensuring inclusive campus access. The University conducts high-quality research on sustainable cities, smart infrastructure, energy efficiency, and resilient communities. Publications in Scopus-indexed journals maintain strong CiteScore and FWCI, with significant outputs in articles, book chapters, and conference papers on sustainable urban practices.

GIU supports arts, heritage, and public engagement through open access to libraries, campus galleries, and green spaces. Cultural heritage is recorded, preserved, and digitized, with dedicated funding for arts and heritage initiatives. Sustainable practices are integrated into operations via energy efficiency, water management, waste reduction, and green building targets. The University promotes sustainable commuting, pedestrian-friendly campus design, and telecommuting, while providing affordable housing for students and staff and prioritizing brownfield redevelopment in campus planning. Collaboration with local authorities ensures alignment with municipal sustainability goals, and public access to green spaces, pedestrian prioritization, and eco-friendly infrastructure demonstrate commitment to community well-being.

GIU will proceed to expand research on sustainable urban development, smart infrastructure, and resilient communities, further contributing to global knowledge and policy. The University will enhance preservation and digitization of cultural heritage, with increased funding and public engagement initiatives. Sustainable campus operations will be further strengthened through advanced energy efficiency, water management, and waste reduction programs, alongside promotion of sustainable commuting and pedestrian-friendly design. GIU will maintain affordable housing initiatives and ensure campus planning aligns with evolving municipal and environmental sustainability goals. By integrating research, cultural preservation, sustainable planning, and inclusive access, GIU will continue to deliver measurable contributions to SDG 11, fostering resilient, sustainable, and inclusive communities for the future.



SDG 12: Responsible Consumption and Production



Green International University (GIU), Lahore, demonstrates strong commitment to SDG 12 by integrating responsible consumption and production across research, operations, and campus management. GIU conducts high-quality research on sustainable materials, circular economy, resource efficiency, and waste management. Publications consistently appear in top 10% Scopus-indexed journals, achieving strong CiteScore and FWCI, while research outputs include articles, book chapters, and conference papers on ethical consumption and sustainable production.

Operational policies reinforce sustainability: ethical sourcing ensures responsible procurement of supplies, food, and services; hazardous materials are managed under dedicated disposal policies; and landfill and recycling policies track waste, maximize recycling, and minimize environmental impact. Policies reducing single-use plastics and disposable items extend to outsourced services and suppliers. Waste tracking monitors total waste, recycling, and landfill diversion in metric tonnes for evidence-based improvement. Annual sustainability reports document research, operational measures, and progress toward SDG 12, enhancing transparency.

GIU will advance research and innovation in sustainable materials, circular economy practices, resource efficiency, and waste management. The University will enhance operational sustainability policies, including ethical sourcing, hazardous materials management, and waste monitoring, while extending these practices to outsourced services and suppliers. Annual sustainability reports will provide comprehensive, data-driven insights to strengthen transparency and facilitate continuous improvement. Through integrated research, policy development, and evidence-based operational practices, GIU will maintain measurable contributions to SDG 12, promoting responsible consumption, sustainable production, and environmental stewardship across the campus, community, and broader society.



SDG 13 : Climate Action

13 CLIMATE ACTION



Green International University (GIU), Lahore, demonstrates strong commitment to SDG 13 by advancing climate action research, implementing low-carbon energy practices, promoting environmental education, and working toward carbon neutrality. GIU conducts high-quality research in climate change, renewable energy, disaster management, and mitigation strategies. The university monitors total energy consumption and low-carbon energy use, including solar, biomass, biogas, and hydropower, ensuring accurate tracking and operational efficiency.



GIU will expand research and innovation in climate change, renewable energy, and disaster mitigation strategies. The University will strengthen low-carbon energy operations and improve monitoring of energy consumption across all campuses. Environmental education initiatives will be enhanced through increased local programs, climate awareness campaigns, and collaborative projects with NGOs and authorities. GIU will advance its carbon neutrality objectives in line with the Greenhouse Gas Protocols, implementing measurable strategies for Scope 1, 2, and partial Scope 3 emissions. Through integrated research, sustainable operations, community engagement, and carbon neutrality planning, GIU will further contribute to SDG 13, promoting sustainable practices, mitigating environmental impact, and enhancing both local and global climate resilience.



SDG 14 : Life Below Water



Green International University (GIU), Lahore, demonstrates strong commitment to SDG 14 by advancing marine conservation research, promoting sustainable aquatic ecosystems, and providing community education on responsible water management. GIU conducts high-impact research on oceans, fisheries, and aquatic ecosystems, with publications consistently appearing in top 10% Scopus-indexed journals, meeting CiteScore benchmarks. Faculty and students collaborate on studies addressing marine biodiversity, sustainable fisheries, and pollution mitigation, achieving high Field-Weighted Citation Impact (FWCI).



Building on these initiatives, GIU will strengthen research and collaborative efforts on marine biodiversity, sustainable fisheries, and pollution mitigation, ensuring its studies remain at the forefront of global knowledge. The University will enhance community education programs on freshwater ecosystem management, sustainable irrigation, aquaculture, and responsible marine tourism, engaging broader audiences. Awareness campaigns on overfishing and IUU fishing will be intensified to guide communities and policymakers toward sustainable practices. By integrating research, education, and outreach, GIU will sustain measurable contributions to SDG 14, promoting the conservation and sustainable use of oceans, seas, and freshwater ecosystems at local, national, and global levels.

SDG 15 – Life on Land



Green International University (GIU), Lahore, demonstrates strong commitment to SDG 15 by advancing research on terrestrial ecosystems, conserving biodiversity, and promoting sustainable land management. GIU produces high-quality research on deforestation, soil degradation, biodiversity conservation, and ecosystem restoration, with publications consistently appearing in top 10% Scopus-indexed journals, meeting CiteScore benchmarks. Faculty and students collaborate on studies exploring habitat preservation, reforestation, sustainable agriculture, and conservation strategies, achieving strong Field-Weighted Citation Impact (FWCI).



Building upon these achievements, GIU will strengthen research and collaborative initiatives on biodiversity conservation, sustainable land management, and ecosystem restoration, ensuring alignment with UN Targets 15.1, 15.3, and 15.5. The University will enhance community outreach programs, including tree plantation campaigns, soil health initiatives, and educational activities on habitat preservation and endangered species protection. Partnerships with government agencies, NGOs, and local stakeholders will be further reinforced to implement long-term, community-based conservation projects. By integrating research excellence, policy advocacy, and community engagement, GIU will sustain measurable contributions to SDG 15, fostering biodiversity preservation, sustainable ecosystem management, and environmental stewardship across local, national, and global contexts.

SDG 16 – Peace, Justice, and Strong Institutions



Green International University (GIU), Lahore, demonstrates a strong commitment to SDG 16 by fostering good governance, promoting transparency, supporting ethical conduct, and enhancing institutional integrity. GIU advances research on governance, rule of law, conflict resolution, and human rights. Publications in top-tier Scopus journals achieve high CiteScore and Field-Weighted Citation Impact (FWCI), demonstrating global relevance. Faculty and students research social accountability, anti-corruption, and policy frameworks, contributing to academic knowledge and practical solutions, with robust outputs including articles, book chapters, and conference papers.



Building on these foundations, GIU will expand research and applied projects on governance, rule of law, conflict resolution, and human rights to inform policy and practice at local, national, and international levels. The University will enhance mechanisms for transparency and accountability, including participatory governance structures and fully accessible complaint systems. Partnerships with government agencies, NGOs, and civil society will be further strengthened to support institutional capacity, improve access to justice, and promote conflict prevention. Training programs and awareness initiatives will be intensified to foster human rights, equality, and ethical practices. By integrating research, governance initiatives, policy support, and community engagement, GIU will advance measurable contributions to SDG 16, strengthening good governance, institutional integrity, and social accountability across all levels.



SDG 17: Partnerships For The Goals at GIU


17 PARTNERSHIPS
FOR THE GOALS



Green International University (GIU) demonstrates a strong institutional commitment to sustainability and the SDGs through active involvement in national policy development, cross-sectoral dialogues, and international collaboration. The University supports governments and NGOs by identifying challenges, developing strategies, modelling futures, monitoring interventions, and promoting adaptive management. GIU regularly hosts and participates in conferences, expert panels, and academic exchanges that strengthen evidence-based decision-making and enhance its role in national and global sustainability discourse. Building on its participation in STEAM Conference 2023, the University expanded global engagement in 2024 by adopting an SDG-data collaboration mechanism, conducting joint research, and reviewing international methodologies to establish best-practice benchmarks for SDG measurement and implementation. GIU also advances SDG action through strong NGO partnerships supporting student volunteering, research, community projects, and the development of SDG-aligned resources. With sustainability embedded in its vision, mission, and core values, the University ensures meaningful SDG education by integrating sustainability across the curriculum, offering dedicated SDG courses, and assessing sustainability literacy through academic and co-curricular evaluations. Additionally, GIU delivers extensive outreach activities for alumni, local communities, and displaced populations, reinforcing its identity as a green, globally engaged, and socially responsible institution committed to transformative sustainable development.



Green International University (GIU) strengthened its sustainability leadership in 2024 by forming productive collaborations with regional NGOs such as Global Shapers, NCP, and 92 News, contributing to SDG policy forums focused on identifying challenges, designing strategies, modelling futures, and promoting adaptive governance. The University's national influence was further supported by the active role of its chairman on major government and non-government bodies, including HEC, PHEC, APSUP, and public health departments, advancing education, public health and well being, gender equity, and poverty reduction. GIU hosted the 1st International Conference on Radiology and Imaging Sciences, fostering cross-sector SDG dialogue, and collaborated with COMSTECH in SDG-focused forums. Its international engagement expanded through the STEAM Conference 2024 Lahore Round, where global partners participated in SDG data review, benchmarking, and refinement of best-practice frameworks. GIU also broadened NGO collaborations by launching community projects, increasing student volunteering, and embedding NGO-supported activities into curricula and research. The University implemented an integrated SDG-education framework across coursework, co-curricular programs, and community engagement, ensuring all degree programs include SDG-aligned content, learning outcomes, and assessments. Community outreach efforts included awareness sessions and SDG-focused activities, while sustainability literacy assessment improved through integrated evaluations, co-curricular tracking, and initial steps toward adopting global tools such as Sulitest, affirming GIU's commitment to fostering sustainability-focused and socially responsible graduates.

- Partnerships with regional NGOs (Global Shapers, NCP, 92 News)
 - Chairman's engagement in major national bodies (HEC, PHEC, APSUP, healthcare departments)
 - Hosting of the 1st International Conference on Radiology and Imaging Sciences
 - Collaboration with COMSTECH
 - Global engagement through STEAM Conference 2024 – Lahore Round
 - Expanded NGO collaborations and community projects
 - Implementation of a university-wide SDG-education framework
 - Strengthened community outreach activities
 - Enhanced sustainability literacy assessment and exploration of Sulitest
- 

SDG 17: Partnerships For The Goals at GIU

17 PARTNERSHIPS
FOR THE GOALS



STUDYATGIU

VISIT: WWW.GIU.EDU.PK



STUDYSTYLE

WWW.GIU.EDU.PK

SDG 17: Partnerships For The Goals at GIU

17 PARTNERSHIPS
FOR THE GOALS



INTERNATIONAL STEAM CONFERENCE LAHORE ROUND AT GREEN INTERNATIONAL UNIVERSITY



GREEN
INTERNATIONAL
UNIVERSITY



STEAM
EDUCATION
EMERGING TRENDS & APPLICATIONS

2nd INTERNATIONAL CONFERENCE ON ADVANCED **STEAM** *ICASE-2024* **EMERGING TRENDS & APPLICATIONS**

Green International University (GIU) strengthened its institutional commitment to the Sustainable Development Goals (SDGs) through its active participation in the international STEAM Conference held in Faisalabad in 2023. This invitation, extended formally by The University of Faisalabad (TUF), provided GIU with an opportunity to enter a regional academic platform dedicated to collaborative learning, evidence-based policymaking, and implementation strategies for the SDGs. The conference allowed GIU to connect with national and international researchers, gain insights into global development challenges, and understand Asia's progress in relation to poverty, hunger, food systems, and climate resilience.

Building on this engagement, GIU launched a structured and comprehensive data-gathering and measuring initiatives in 2024. The University prioritized areas that align with Pakistan's urgent development needs and broader Asia-Pacific concerns, identifying SDGs such as No Poverty, Zero Hunger, Good Health & Well Being, Responsible Consumption and Production, particularly food waste, and Climate Action as central to this work. Throughout the year, the University worked extensively on these themes, conducting a comprehensive exercise alongside national and international researchers to gather data, measure SDG progress, and strengthen methodological accuracy. Through international collaboration and joint research, GIU also reviewed comparative approaches and developed a set of international best practices for tackling the SDGs more effectively. These domains not only reflect critical national concerns but also highlight areas where Pakistan and the region face major monitoring and implementation gaps. and to develop best practices as per international benchmark as stands on tackling the SDGs

Distinguished **Rector GIU & ED GIU** Invited in STEAM 2024 as a partner



GREEN
INTERNATIONAL
UNIVERSITY



STEAM
EDUCATION
EMERGING TRENDS & APPLICATIONS

WE ARE HONORED TO

Welcome

**Prof Dr Syed
Amir Gilani**

Rector, Green International University



at the
2nd

INTERNATIONAL CONFERENCE ON ADVANCED

STEAM

EDUCATION (ICASE-2024)

Theme: **Emerging Trends & Applications**

November 7th -8th, 2024



The
University of
Faisalabad



GREEN
INTERNATIONAL
UNIVERSITY



STEAM
EDUCATION
EMERGING TRENDS & APPLICATIONS

WE ARE HONORED TO

Welcome

Mr Muhammad Afzal

Executive Director Academics and Institutional
Performance, Green International University



at the
2nd

INTERNATIONAL CONFERENCE ON ADVANCED

STEAM

EDUCATION (ICASE-2024)

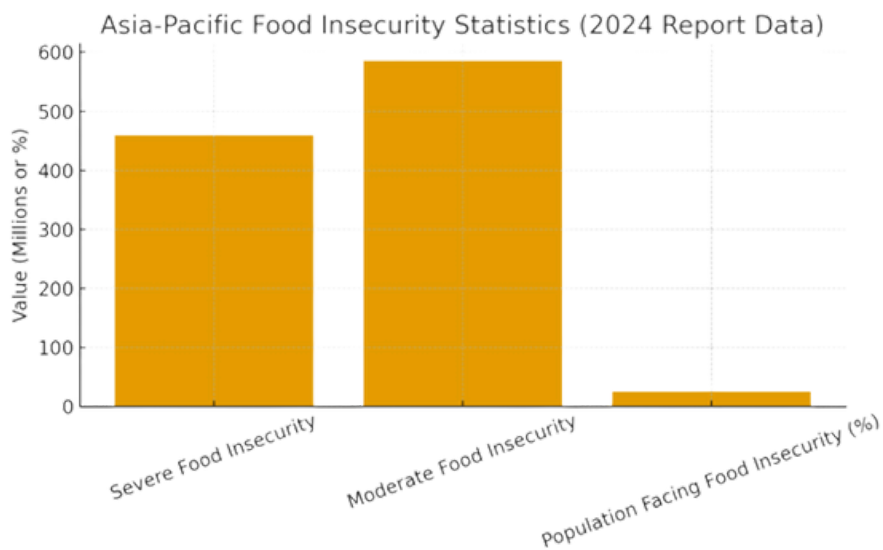
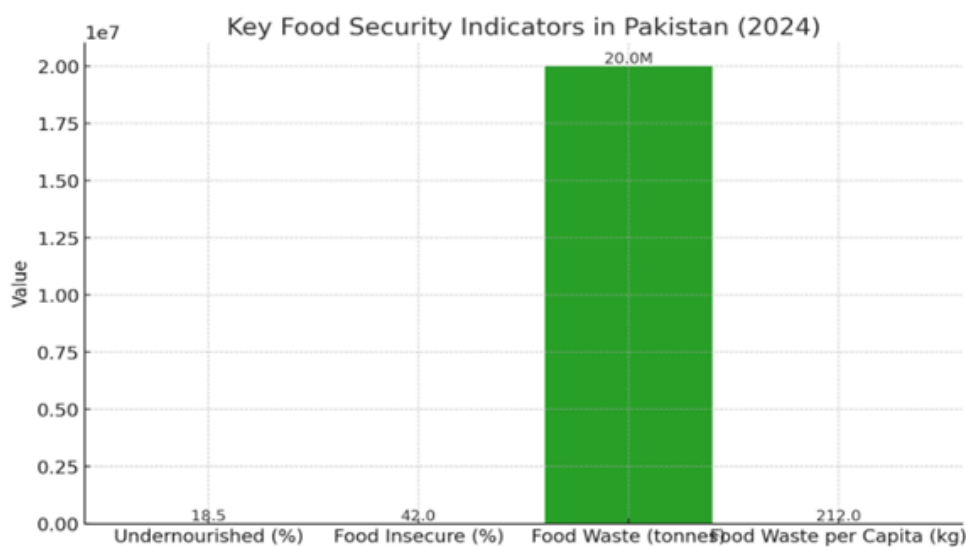
Theme: **Emerging Trends & Applications**

November 7th -8th, 2024

INTERNATIONAL COLLABORATION

DATA GATHERING/MEASURING FOR SDGs

Green International University (GIU) designed its 2024 data-collection strategy to complement Pakistan’s national SDG indicator framework while aligning with global and regional methodologies. The reviewed data highlights pressing challenges: 18.5% of Pakistan’s population is undernourished, nearly 42% experience moderate or severe food insecurity, and approximately 26% of annual food production around 20 million tonnes is lost or wasted each year, with per capita food waste at 212 kg, among the highest globally. Climate-related events such as floods, droughts, and heatwaves continue to disrupt agricultural systems, deepen poverty, and undermine household resilience. In the Asia-Pacific region, the 2024 SDG Partnership Report shows that 25% of the population faced food insecurity by 2021, including 460 million in severe food insecurity and 586 million in moderate conditions, with 20.8 million more women than men affected in Central and Southern Asia. Persistent data gaps and inconsistent SDG reporting across the region further restrict evidence-based policymaking. In this context, GIU’s initiative addressed critical knowledge gaps in poverty, food security, malnutrition, food loss, and climate impacts.






Throughout 2024, GIU conducted extensive collaborative research with national and international scholars, gathering data, evaluating SDG progress, and strengthening methodological accuracy. Through international collaboration and research, GIU reviewed comparative approaches and developed international best practices for tackling the SDGs, ensuring that its strategies were aligned with global standards. The University also developed policy-oriented recommendations emphasizing climate-sensitive social protection, investment in sustainable agriculture, improved food recovery and redistribution, and enhanced coordination on poverty, climate, and food policy. Food loss and waste, frequently neglected in national SDG reporting, were highlighted as key areas for urgent attention to improve food system sustainability.

GIU simultaneously strengthened its internal research and academic culture by promoting faculty, researcher, and student engagement with SDG themes. Awareness programs, academic discussions, and collaborative activities linked classroom learning with national development challenges. Relationships with scholars and policymakers were cultivated to promote inter-university cooperation and contribute to national SDG dialogues. Data review revealed several challenges, including limited availability and inconsistency of SDG indicators, incomplete reporting on food waste, climate impacts, and multidimensional poverty, and resource constraints that restrict sustained monitoring. Policy fragmentation across food security, climate, and poverty initiatives further highlighted the need for integrated approaches.

To address these challenges, GIU outlined strategic actions for future work, including establishing a dedicated SDG Data Cell to monitor key indicators in alignment with UN and ESCAP frameworks. Pilot projects were recommended on food recovery, climate-resilient agriculture, and community awareness, while partnerships with national and Asia-Pacific institutions aimed to strengthen research capacity, attract funding, and enhance knowledge exchange. Outreach programs, short courses, and public seminars focused on poverty reduction, hunger elimination, food waste minimization, and climate adaptation were also proposed. GIU's participation in the 2023 STEAM Conference served as a catalytic moment, expanding institutional networks and reinforcing the University's commitment to bridging SDG data gaps, supporting policy development, and contributing to regional and global SDG progress. By addressing critical issues such as poverty, hunger, food loss, and climate change, GIU aligns its academic strengths with Pakistan's most urgent development priorities while contributing to sustainable development at regional and global levels.



DEVELOPMENT OF BEST INTERNATIONAL PRACTICES ON TACKLING THE SDGs

Building on insights gained from on engagement in STEAM 2023, GIU continued throughout 2024 to strengthen its institutional role in national/international SDG monitoring efforts through a comprehensive, collaborative data-gathering exercise. Working closely with both local and international researchers, the University focused on priority areas aligned with Pakistan's development needs. No Poverty, Zero Hunger, Good Health & Wellbeing, Responsible Consumption and Production with an emphasis on food waste, and Climate Action. These domains were selected not only for their national urgency but also for their alignment with global and regional gaps in SDG tracking. Through joint research, comparative assessments, and the study of international best practices, GIU contributed to refining methodologies and enhancing the quality of SDG-related evidence in Pakistan.

The main points of best practices for tackling the SDGs as follows:

- **Evidence-Based Policy Development** – Align national and regional strategies with reliable data and research.
- **Cross-Sector Collaboration** – Engage governments, NGOs, private sector, academia, and civil society for integrated solutions.
- **International Research Partnerships** – Collaborate with global institutions to share knowledge, tools, and methodologies.
- **Comparative SDG Assessments** – Review and adapt international models and approaches suited to local contexts.
- **Data Standardization and Monitoring** – Establish harmonized SDG indicators and reporting frameworks for accurate tracking.
- **Capacity Building and Training** – Develop skills among policymakers, researchers, and communities to implement SDG initiatives.
- **Innovation and Technology Integration** – Use digital platforms, GIS, AI, and real-time dashboards to improve SDG monitoring and interventions.
- **Sustainability-Focused Funding** – Allocate resources to initiatives that ensure long-term environmental, social, and economic impact.
- **Community Engagement and Participation** – Involve local populations in decision-making, awareness campaigns, and implementation strategies.
- **Scenario Planning and Forecasting** – Anticipate future challenges through modeling and resilience-focused strategies.
- **Knowledge Dissemination and Best Practice Sharing** – Publish case studies, policy briefs, and reports to promote global learning.
- **Continuous Evaluation and Adaptation** – Regularly review progress, update strategies, and implement lessons learned to achieve SDG targets effectively.

Advancing The SDGs

Sustainability

Future



www.giu.edu.pk



Address:

Bhobtian Avenue, 9 Km, Raiwind Road,
Lahore, Pakistan

Tel: +92 42 35459807-09

